

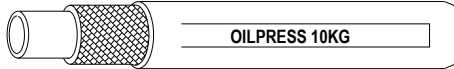


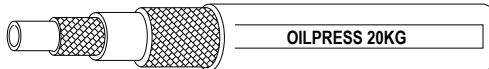
MANGUERA PRESS	
USO:	INDUSTRIAL
UTILIZACION:	AGUA-AIRE-LIQUIDOS NO CORROSIVOS
CARACTERISTICAS:	EXPELENTE

			FULLPRES 10KG
CODIGO	DIAM. INT. M.M.	PRESION DE TRABAJO (KG/CM2)	
201-10-4	1/4	10	
201-10-5	5/16	10	
201-10-6	3/8	10	
201-10-8	1/2	10	
201-10-10	5/8	10	
201-10-12	3/4	10	
201-10-16	1"	10	


			FULPRESS 20KG
CODIGO	DIAM. INT. M.M.	PRESION DE TRABAJO (KG/CM2)	
201-20-4	1/4	20	
201-20-5	5/16	20	
201-20-6	3/8	20	
201-20-8	1/2	20	
201-20-10	5/8	20	
201-20-12	3/4	20	
201-20-16	1"	20	


MANGUERA PRESS	
USO:	INDUSTRIAL
UTILIZACION:	HIDROCARBUROS (maximo 30% aromaticos)
CARACTERISTICAS:	EXPELENTE

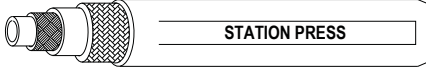
			OILPRESS 10KG
CODIGO	DIAM. INT. M.M.	PRESION DE TRABAJO (KG/CM2)	
202-10-4	1/4	10	
202-10-5	5/16	10	
202-10-6	3/8	10	
202-10-8	1/2	10	
202-10-10	5/8	10	
202-10-12	3/4	10	
202-10-16	1"	10	


			OILPRESS20KG
CODIGO	DIAM. INT. M.M.	PRESION DE TRABAJO (KG/CM2)	
202-20-4	1/4	20	
202-20-5	5/16	20	
202-20-6	3/8	20	
202-20-8	1/2	20	
202-20-10	5/8	20	
202-20-12	3/4	20	
202-20-14	7/8	20	
202-20-16	1"	20	

MANGUERA PRESS	
USO:	INDUSTRIAL
UTILIZACION:	AGUA
CARACTERISTICAS:	EXPELENTE
TIPOS: MIURA (NEGRO), ACQUAPRESS (ROJO), STATION PRESS (NEGRO), LAVAPRESS (NEGRO)	

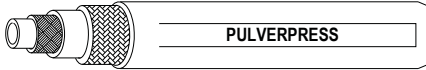
			MIURA
CODIGO	DIAM. INT. M.M.	PRESION DE TRABAJO (KG/CM2)	
215-M-8	13MM	4	
215-M-12	19MM	4	
215-M-16	25MM	4	

			ACQUAPRESS
CODIGO	DIAM. INT. M.M.	PRESION DE TRABAJO (KG/CM2)	
216-8	13MM	6	
216-12	19MM	6	
216-16	25MM	6	

			STATION PRESS
CODIGO	DIAM. INT. M.M.	PRESION DE TRABAJO (KG/CM2)	
217-6	10MM	85	
217-8-35	13MM	35	
217-8-85	13MM	85	
217-12	19MM	35	
217-16	25MM	35	

			LAVAPRESS
CODIGO	DIAM. INT. M.M.	PRESION DE TRABAJO (KG/CM2)	
218-8	13MM	60	
218-12	19MM	60	

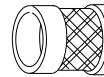
MANGUERA PRESS	
USO:	AGRICOLA
UTILIZACION:	PULVARIZACION
CARACTERISTICAS:	EXPELENTE

			PULVEPRESS
CODIGO	DIAM. INT. M.M.	PRESION DE TRABAJO (KG/CM2)	
219-5	8MM	35	
219-6-35	10MM	35	
219-6-60	10MM	60	
219-6-85	10MM	85	
219-8-35	13MM	35	
219-8-60	13MM	60	
219-8-85	13MM	85	

MANGUERA PRESS	
USO:	INDUSTRIAL - AUTOMOTOR - DOMICILIARIO
UTILIZACION:	GAS - AGUA CALIENTE - AIRE - SIS. DE FRENOS
CARACTERISTICAS:	EXPELENTE
TIPOS: GAS-EN, GAS-FLG (NEGRO), AIREPRESS (NEGRO), SERVOPRESS (NEGRO)	

GAS-EN, GAS FLG

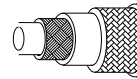
CODIGO	DIAM. INT. M.M.	PRESION DE TRABAJO (KG/CM2)
220-5-EN	8MM	17
220-6-EN	10MM	17
220-4-FLG	6MM	17



GAS-EN , GAS-FLG

AIREPRESS

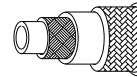
CODIGO	DIAM. INT. M.M.	PRESION DE TRABAJO (KG/CM2)
222-8	13MM	5
222-10	16MM	5
222-12	19MM	5
222-14	22MM	5



AIREPRESS

SERVOPRESS

CODIGO	DIAM. INT. M.M.	PRESION DE TRABAJO (KG/CM2)
215-6	9.5MM X 19.5	21
215-8	12.7MM X 22	21



SERVOPRESS

MANGUERA PRESS

USO:	AUTOMOTOR
UTILIZACION:	PASO DE COMBUSTIBLE

PC

CODIGO	DIAM. INT. M.M.	DIAM. EXT. M.M.
223-38	3MM	8MM
223-49	4MM	9MM
223-510	5MM	10MM
223-611	6MM	11MM
223-712	7MM	12MM
223-814	8MM	14MM
223-915	9MM	15MM
223-1016	10MM	16MM
223-1117	11MM	17MM
223-1218	12MM	18MM
223-1320	13MM	20MM



PC

PCT

CODIGO	DIAM. INT. M.M.	DIAM. EXT. M.M.
224-35	3.5MM	9.5MM
224-511	5MM	11MM
224-613	6MM	13MM
224-714	7MM	14MM
224-815	8MM	15MM
224-916	9MM	16MM
224-1321	13MM	21MM

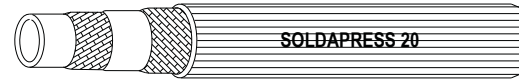


PCT

MANGUERA PRESS	
USO:	INDUSTRIAL
UTILIZACION:	OXIGENO - ACETILENO
CARACTERISTICAS:	EXPELENTE
TIPOS: SOLDAPRESS OXIGENO (AZUL/VERDE), ACETILENO (ROJO)	

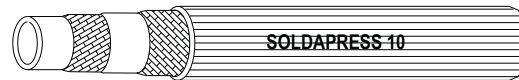
SOLDAPRESS OXIGENO

CODIGO	DIAM. INT. M.M.	PRESION DE TRABAJO (KG/CM2)
214-O-4	6MM	20
214-O-5	8MM	20



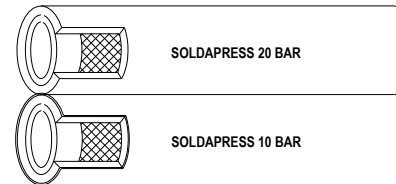
SOLDAPRESS ACETILENO

CODIGO	DIAM. INT. M.M.	PRESION DE TRABAJO (KG/CM2)
214-A-4	6MM	10
214-A-5	8MM	10
214-A-6	10MM	10



SOLDAPRESS BITUBO

CODIGO	DIAM. INT. M.M.	PRESION DE TRABAJO (KG/CM2)
214-4-5	6X8MM	20 - 10
214-5-5	8X8MM	20 - 10
214-5-6	8X10MM	20 - 10



MANGUERA PRESS

USO:	SURTIDORES
UTILIZACION:	COMBUSTIBLES
CARACTERISTICAS:	EXPELENTE
TIPO: SURTIPRESS (NEGRO - AMARILLO - ROJO - VERDE - AZUL)	

SURTIPRESS

CODIGO	DIAM. INT. M.M.	PRESION DE TRABAJO (KG/CM2)
213-AM-10	5/8	10
213-AM-12	3/4	10
213-AZ-10	5/8	10
213-AZ-12	3/4	10
213-R-10	5/8	10
213-R-12	3/4	10
213-V-10	5/8	10
213-V-12	3/4	10
213-N-10	5/8	10
213-N-12	3/4	10
213-N-16	1"	10

