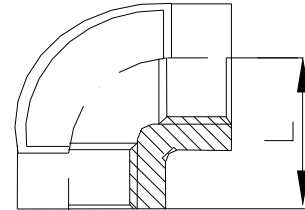


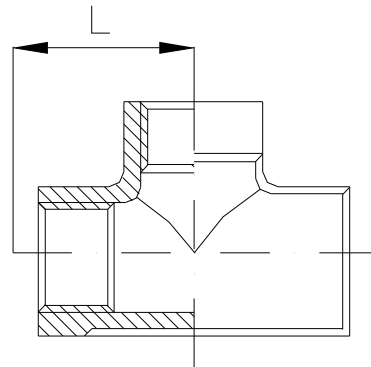
CODO 90 H-H ACERO INOXIDABLE 316

CODIGO	MEDIDA	L
090-02	1/4	19
090-03	3/8	23
090-04	1/2	27
090-05	3/4	32
090-06	1	37
090-07	1 1/2	42
090-08	1 1/4	48
090-09	2	56



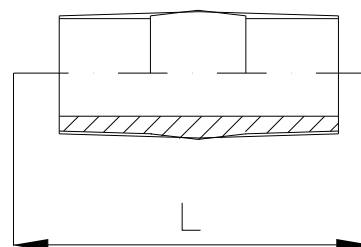
TEE H-H-H ACERO INOXIDABLE 316

CODIGO	MEDIDA	L
130-02	1/4	19
130-03	3/8	21
130-04	1/2	22
130-05	3/4	25
130-06	1	28
130-07	1 1/2	33
130-08	1 1/4	36
130-09	2	43



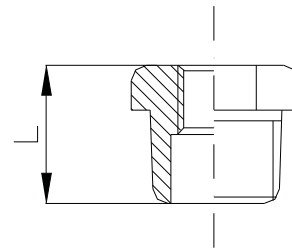
NIPLA ACERO INOXIDABLE 316

CODIGO	MEDIDA	L
150-02	1/4	40
150-03	3/8	40
150-04	1/2	50
150-05	3/4	60
150-06	1	70
150-07	1 1/2	75
150-08	1 1/4	80
150-09	2	100



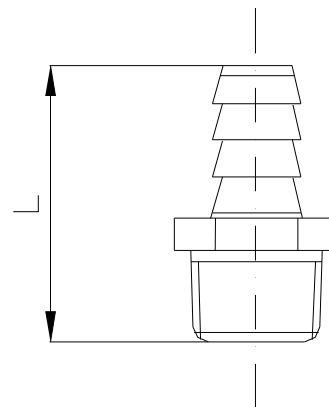
TUERCA REDUCCION ACERO INOXIDABLE 316

CODIGO	MEDIDA	L
241-02	1/4	16
241-03	3/8	19
241-04	1/2	23
241-05	3/4	28
241-06	1	36
241-07	1 1/2	46
241-08	1 1/4	50
241-09	2	65



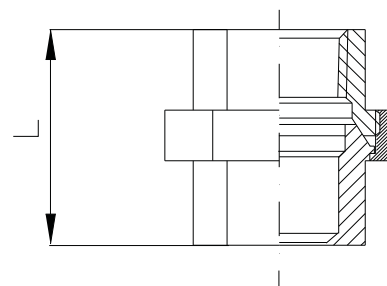
RACORD ACERO INOXIDABLE 316

CODIGO	MEDIDA	L
399-02	1/4	15
399-03	3/8	19
399-04	1/2	23
399-05	3/4	29
399-06	1	36
399-07	1 1/2	46
399-08	1 1/4	51
399-09	2	63



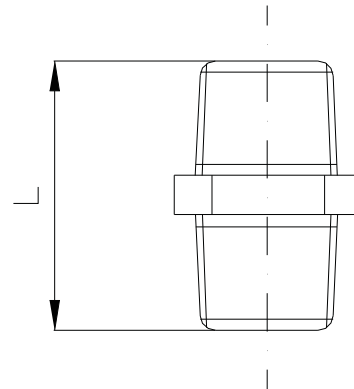
UNION DOBLE ACERO INOXIDABLE 316

CODIGO	MEDIDA	L
340-02	1/4	42
340-03	3/8	45
340-04	1/2	48
340-05	3/4	52
340-06	1	58
340-07	1 1/2	65
340-08	1 1/4	70
340-09	2	78



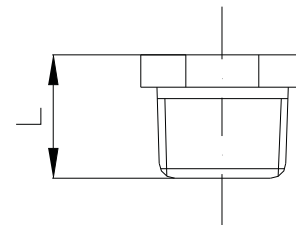
ENTREROSCA ACERO INOXIDABLE 316

CODIGO	MEDIDA	L
280-02	1/4	16
280-03	3/8	19
280-04	1/2	23
280-05	3/4	28
280-06	1	36
280-07	1 1/2	46
280-08	1 1/4	50
280-09	2	65



TAPON ACERO INOXIDABLE 316

CODIGO	MEDIDA	L
290-02	1/4	16
290-03	3/8	19
290-04	1/2	23
290-05	3/4	29
290-06	1	36
290-07	1 1/2	46
290-08	1 1/4	50
290-09	2	65



CUPLA ACERO INOXIDABLE 316

CODIGO	MEDIDA	L
270-02	1/4	19
270-03	3/8	22
270-04	1/2	27
270-05	3/4	32
270-06	1	40
270-07	1 1/2	48
270-08	1 1/4	55
270-09	2	66

