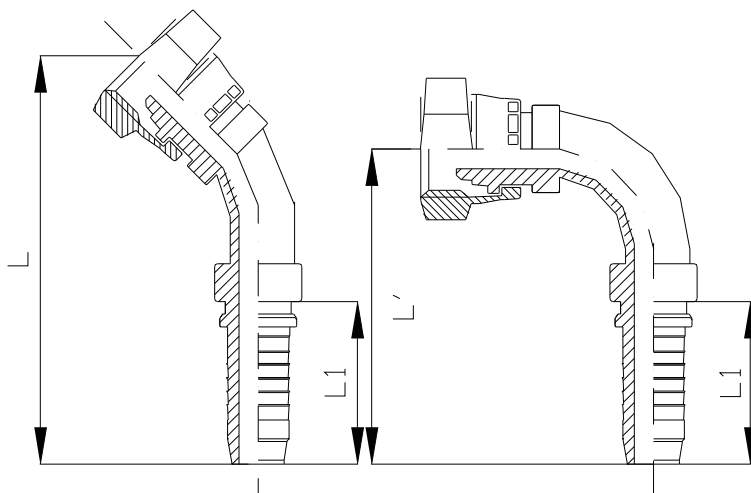


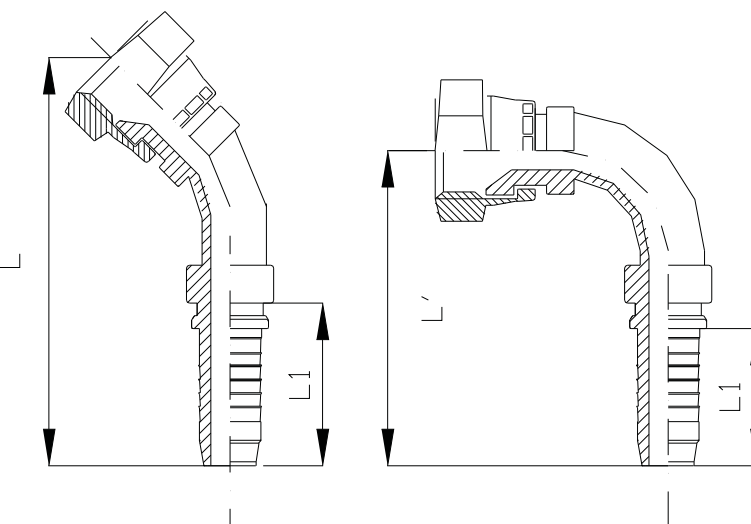
TERMINAL HG NF ASIENTO TUBO CODO 45° Y CODO 90°

CODIGO	ROSCA UNF	MANGUERA	L	L'	L1
NT330-4-4	9/16"	1/4"	65	60	27
NT330-6-4	3/4"	1/4"	65	60	27
NT330-4-6	9/16"	3/8"	65	60	29
NT330-6-6	3/4"	3/8"	65	60	29
NT330-8-6	7/8"	3/8"	65	60	29
NT330-6-8	3/4"	1/2"	80	75	36
NT330-8-8	7/8"	1/2"	80	75	36
NT330-10-12	1 1/16"	3/4"	130	120	44
NT330-12-12	1 3/16"	3/4"	130	120	44
NT330-14-12	1 5/16"	3/4"	130	120	44
NT330-14-16	1 5/16"	1"	140	130	48



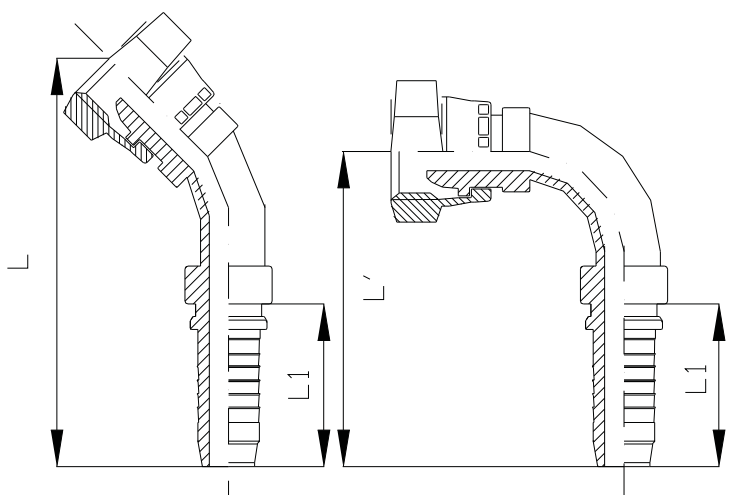
TERMINAL HG NF JIC CODO 45° Y CODO 90°

CODIGO	ROSCA UNF	MANGUERA	L	L'	L
NT350-4-4	9/16"	1/4"	65	60	27
NT350-6-4	3/4"	1/4"	65	60	27
NT350-4-6	9/16"	3/8"	65	60	29
NT350-6-6	3/4"	3/8"	65	60	29
NT350-8-6	7/8"	3/8"	65	60	29
NT350-6-8	3/4"	1/2"	80	75	36
NT350-8-8	7/8"	1/2"	80	75	36
NT350-10-12	1 1/16"	3/4"	130	120	44
NT350-12-12	1 3/16"	3/4"	130	120	44
NT350-14-12	1 5/16"	3/4"	130	120	44
NT350-14-16	1 5/16"	1"	140	130	48
NT350-16-20	1 5/8"	1 1/4"	145	135	55



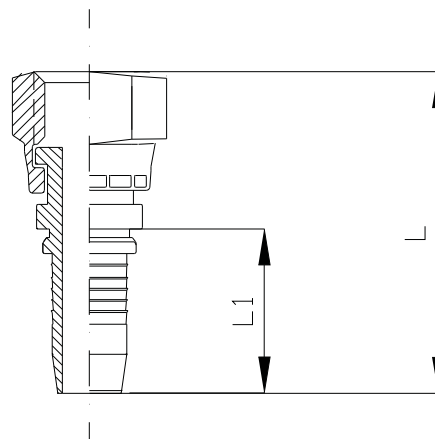
TERMINAL HG BSP ASIENTO MACHO CODO 45° Y CODO 90°

CODIGO	ROSCA BSP	MANGUERA	L	L'	L1
NT370-4-4	1/4"	1/4"	65	60	27
NT370-6-6	3/8"	3/8"	65	60	29
NT370-8-6	1/2"	3/8"	65	60	29
NT370-8-8	1/2"	1/2"	80	75	36
NT370-12-12	3/4"	3/4"	130	120	44
NT370-16-16	1"	1"	140	130	48
NT370-20-20	1 1/4"	1 1/4"	150	140	55
NT370-24-24	1 1/2"	1 1/2"	162	152	64



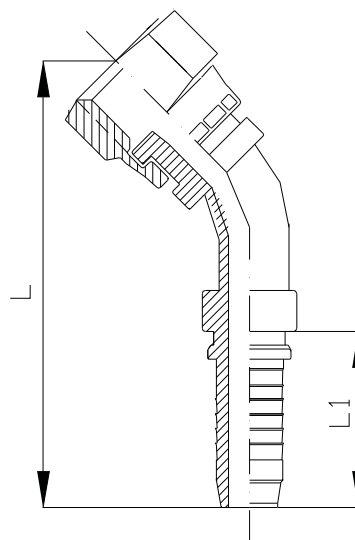
TERMINAL HG NF ASIEN TO PLANO RECTO

CODIGO	ROSCA UNF	MANGUERA	L	L1
390-4-4	9/16"	1/4"	75	27
390-6-4	11/16"	1/4"	75	27
390-6-6	11/16"	3/8"	75	29
390-8-6	13/16"	3/8"	75	29
390-8-8	13/16"	1/2"	75	36
390-10-8	1"	1/2"	85	36
390-10-10	1"	5/8"	85	35
390-10-12	1"	3/4"	90	44
390-12-12	1 3/16"	3/4"	95	44
390-16-16	1 7/16"	1"	100	48



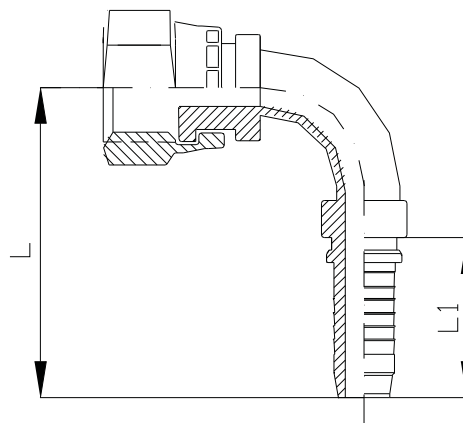
TERMINAL HG NF ASIEN TO PLANO CODO 45°

CODIGO	ROSCA UNF	MANGUERA	L	L1
NT390-4-4	9/16"	1/4"	65	27
NT390-6-4	11/16"	1/4"	65	27
NT390-6-6	11/16"	3/8"	65	29
NT390-8-6	13/16"	3/8"	70	29
NT390-8-8	13/16"	1/2"	80	36
NT390-10-8	1"	1/2"	85	36
NT390-10-10	1"	5/8"	100	35
NT390-10-12	1"	3/4"	115	44
NT390-12-12	1 3/16"	3/4"	115	44
NT390-16-16	1 7/16"	1"	125	48



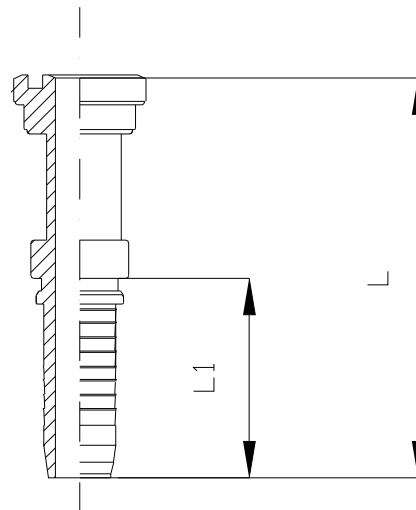
TERMINAL HG NF ASIEN TO PLANO CODO 90°

CODIGO	ROSCA UNF	MANGUERA	L	L1
392-4-4	9/16"	1/4"	60	27
392-6-4	11/16"	1/4"	60	27
392-6-6	11/16"	3/8"	60	29
392-8-6	13/16"	3/8"	65	29
392-8-8	13/16"	1/2"	75	36
392-10-8	1"	1/2"	80	36
392-10-10	1"	5/8"	95	35
392-10-12	1"	3/4"	110	44
392-12-12	1 3/16"	3/4"	110	44
392-16-16	1 7/16"	1"	120	48



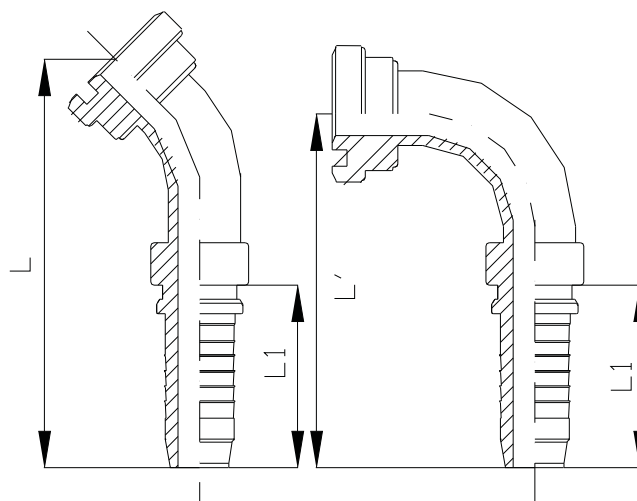
TERMINAL ANILLO RECTO PARA PRENSAR

CODIGO	DIAM. ANILLO	MANGUERA	L	L1
AA380-8-8	30,1	1/2"	85	36
AA380-12-8	38,1	1/2"	85	36
AA38012-12	38,1	3/4"	87	44
AA380-16-12	44,4	3/4"	87	4
AA380-16-16	44,4	1"	90	48
AA380-20-16	50,8	1"	90	48
AA380-16-20	44,4	1 1/4"	118	55
AA380-20-20	50,8	1 1/4"	121	55
AA380-20-24	50,8	1 1/2"	113	64
AA380-24-24	60,3	1 1/2"	17	64
AA80-24-32	60,3	2"	118	72
AA380-32-32	71,4	2"	123	72



TERMINAL ANILLO CODO 45° Y 90° PARA PRENSAR

CODIGO	DIAM. ANILLO	MANGUERA	L	L'	L1
NTAA8-8	30,1	1/2"	84	67	36
NTAA12-8	38,1	1/2"	85	67	36
NTAA12-12	38,1	3/4"	92	85	44
NTAA16-12	44,4	3/4"	104	85	44
NTAA16-16	44,4	1"	104	99	48
NTAA20-16	50,8	1"	104	99	48
NTAA16-20	44,4	1 1/4"	114	105	55
NTAA20-20	50,8	1 1/4"	114	105	55
NTAA24-20	60,3	1 1/4"	114	105	55
NTAA20-24	50,8	1 1/2"	128	139	64
NTAA24-24	60,3	1 1/2"	128	139	64
NTAA24-32	60,3	2"	137	164	72
NTAA32-32	71,4	2"	138	165	72



TERMINAL OJAL PARA BULON PARA PRENSAR

CODIGO	P/TORNILLO	MANGUERA	L	L1
300-M14-4	M14	1/4"	47	27
300-M16-4	M16	1/4"	51	27
300-M14-6	M14	3/8"	58	29
300-M16-6	M16	3/8"	61	29
300-M18-6	M18	3/8"	62	29
300-M20-6	M20	3/8"	63	29
300-M22-6	M22	3/8"	64	29
300-L6-6	3/4" UNF	3/8"	61	29
300-L8-6	7/8" UNF	3/8"	62	29
300-M16-8	M16	1/2"	65	36
300-M18-8	M18	1/2"	66	36
300-M20-8	M20	1/2"	68	36
300-M22-8	M22	1/2"	68	36
300-L6-8	3/4" UNF	1/2"	67	36
300-L8-8	7/8" UNF	1/2"	68	36

