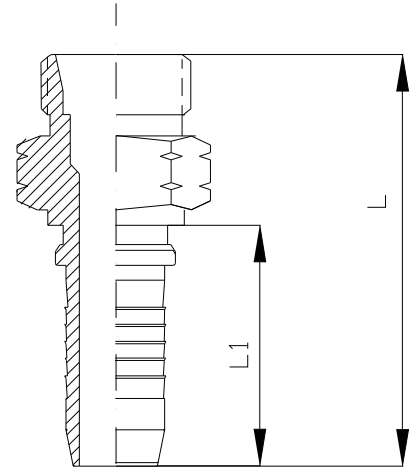


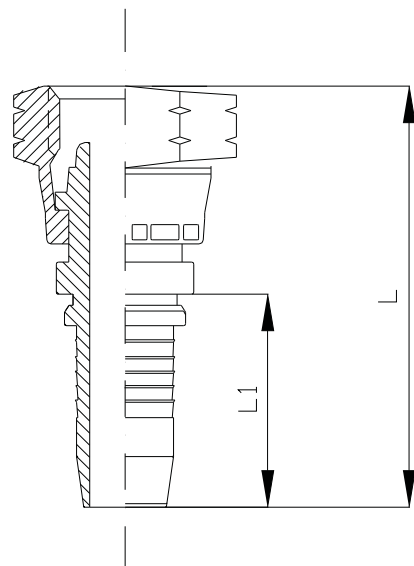
TERMINAL MF MILIMÉTRICO ASIENTO TUBO SERIE LIVIANA PARA PRENSAR

CODIGO	ROSCA	TUBO	MANGUERA	L	L1
321M126-4	12x1,5	6mm	1/4"	49	27
321M148-4	14x1,5	8mm	1/4"	51	27
321M1610-4	16x1,5	10mm	1/4"	56	27
321M1610-6	16x1,5	10 mm	3/8"	56	29
321M1812-6	18x1,5	12mm	3/8"	59	29
321M2215-8	22x1,5	15mm	1/2"	65	36
321M2216-8	22x1,5	16mm	1/2"	65	36
321M2618-10	26x1,5	18mm	5/8"	66	35
321M3022-12	30x2	22mm	3/4"	83	44
321M3628-16	36x2	28mm	1"	85	48
321M4535-20	45x2	35mm	1 1/4"	93	55
321M5242-20	52x2	42mm	1 1/4"	98	55
321M5242-24	52x2	42mm	1 1/2"	100	64



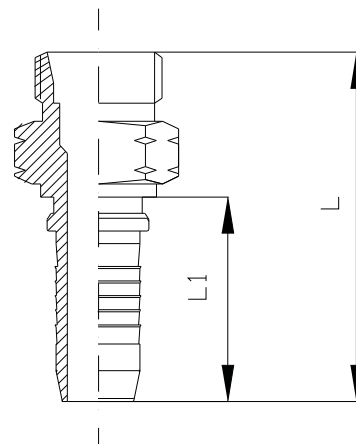
TERMINAL HG MILIMÉTRICO ASIENTO TUBO SERIE LIVIANA PARA PRENSAR

CODIGO	ROSCA	TUBO	MANGUERA	L	L1
325M126-4	12x1,5	6mm	1/4"	54	27
325M148-4	14x1,5	8mm	1/4"	54	27
325M1610-4	16x1,5	10mm	1/4"	55	27
325M1610-6	16x1,5	10 mm	3/8"	55	29
325M1812-6	18x1,5	12mm	3/8"	59	29
325M2215-8	22x1,5	15mm	1/2"	63	36
325M2216-8	22x1,5	16mm	1/2"	63	36
325M2618-10	26x1,5	18mm	5/8"	83	35
325M3022-12	30x2	22mm	3/4"	81	44
325M3628-16	36x2	28mm	1"	94	48
325M4535-20	45x2	35mm	1 1/4"	95	55
325M5242-20	52x2	42mm	1 1/4"	100	55
325M5242-24	52x2	42mm	1 1/2"	100	64



TERMINAL MF MILIMÉTRICO ASIENTO TUBO SERIE PESADA PARA PRENSAR

CODIGO	ROSCA	TUBO	MANGUERA	L	L1
322M168-4	16x1,5	8mm	1/4"	56	27
322M168-6	16x1,5	8mm	3/8"	56	29
322M1810-6	18x1,5	10mm	3/8"	59	29
322M2012-6	20x1,5	12mm	3/8"	62	29
322M2214-8	22x1,5	14mm	1/2"	65	36
322M2416-8	24x1,5	16mm	1/2"	75	36
322M2417-8	24x1,5	17mm	1/2"	75	36
322M3020-10	30x2	20mm	5/8"	83	35
322M3021-10	30x1,5	21mm	5/8"	83	35
322M3020-12	30x2	20mm	3/4"	84	44
322M3021-12	30x1,5	21mm	3/4"	84	44
322M3625-12	36x2	25mm	3/4"	85	44
322M3625-16	36x2	25mm	1"	85	48
322M4230-16	42x2	30mm	1"	93	48
322M5238-20	52x2	38mm	1 1/4"	98	55
322M5238-24	52x2	38mm	1 1/2"	100	64



TERMINAL HG MILIMÉTRICO ASIENTO TUBO SERIE PESADA PARA PRENSAR

CODIGO	ROSCA	TUBO	MANGUERA	L	L1
326M168-4	16x1,5	8mm	1/4"	55	27
326M168-6	16x1,5	8mm	3/8"	55	29
326M1810-6	18x1,5	10mm	3/8"	59	29
326M2012-6	20x1,5	12mm	3/8"	62	29
326M2214-8	22x1,5	14mm	1/2"	63	36
326M2416-8	24x1,5	16mm	1/2"	74	36
326M2417-8	24x1,5	17mm	1/2"	74	36
326M3020-10	30x2	20mm	5/8"	81	35
326M3021-10	30x1,5	21mm	5/8"	81	35
326M3020-12	30x2	20mm	3/4"	81	44
326M3021-12	30x1,5	21mm	3/4"	81	44
326M3625-12	36x2	25mm	3/4"	94	44
326M3625-16	36x2	25mm	1"	94	48
326M4230-16	42x2	30mm	1"	95	48
326M5238-20	52x2	38mm	1 1/4"	100	55
326M5238-24	52x2	38mm	1 1/2"	100	64

