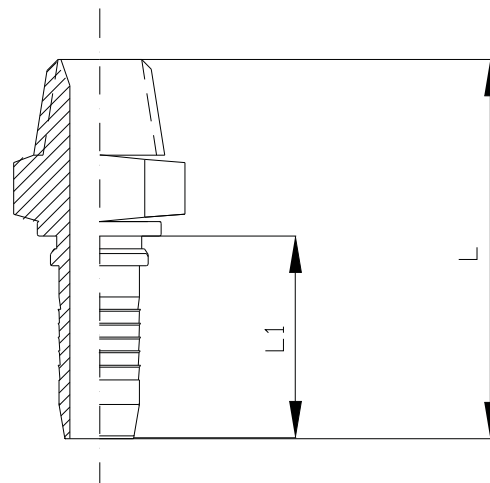


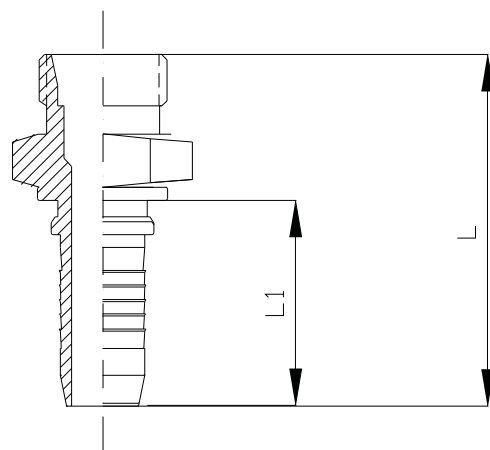
TERMINAL MF NPT PARA PRENSAR

CODIGO	ROSCA NPT	MANGUERA	L	L1
310-2-4	1/8"	1/4"	48	27
310-4-4	1/4"	1/4"	53	27
310-6-4	3/8"	1/4"	56	27
310-4-6	1/4"	3/8"	57	29
310-6-6	3/8"	3/8"	58	29
310-8-6	1/2"	3/8"	64	29
310-6-8	3/8"	1/2"	66	36
310-8-8	1/2"	1/2"	71	36
310-12-12	3/4"	3/4"	82	44
310-16-16	1"	1"	95	48
310-20-20	1 1/4"	1 1/4"	105	55
310-24-24	1 1/2"	1 1/2"	115	64
310-32-32	2"	2"	130	72



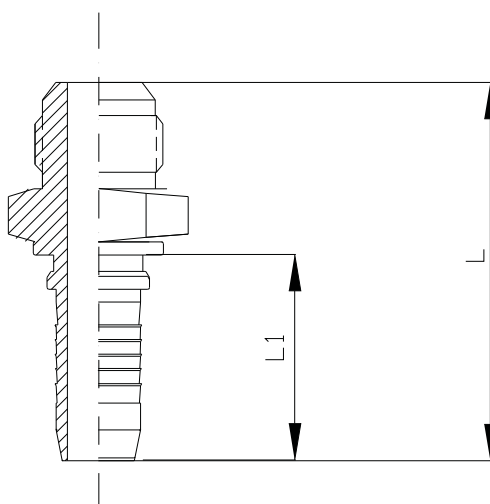
TERMINAL MF ASIENTO VIOLA PARA PRENSAR

CODIGO	ROSCA UNF	MANGUERA	L	L1
320-2-4	7/16"	1/4"	51	27
320-4-4	9/16"	1/4"	52	27
320-6-4	3/4"	1/4"	55	27
320-4-6	9/16"	3/8"	55	29
320-6-6	3/4"	3/8"	59	29
320-8-6	7/8"	3/8"	62	29
320-6-8	3/4"	1/2"	66	36
320-8-8	7/8"	1/2"	68	36
320-10-12	1 1/16"	3/4"	82	44
320-12-12	1 3/16"	3/4"	82	44
320-14-16	1 5/16"	1"	92	48
320-16-16	1 5/8"	1"	98	48



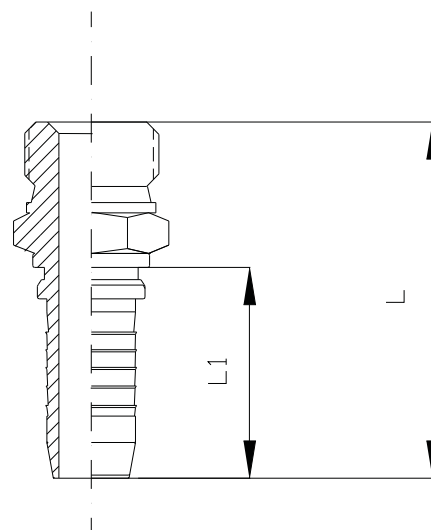
TERMINAL MF JIC PARA PRENSAR

CODIGO	ROSCA UNF	MANGUERA	L	L1
340-2-4	7/16"	1/4"	53	27
340-4-4	9/16"	1/4"	54	27
340-6-4	3/4"	1/4"	56	27
340-4-6	9/16"	3/8"	57	29
340-6-6	3/4"	3/8"	62	29
340-8-6	7/8"	3/8"	63	29
340-6-8	3/4"	1/2"	68	36
340-8-8	7/8"	1/2"	70	36
340-10-12	1 1/16"	3/4"	82	44
340-12-12	1 3/16"	3/4"	87	44
340-14-12	1 5/16"	3/4"	88	44
340-14-16	1 5/16"	1"	93	48
340-16-16	1 5/8"	1"	98	48



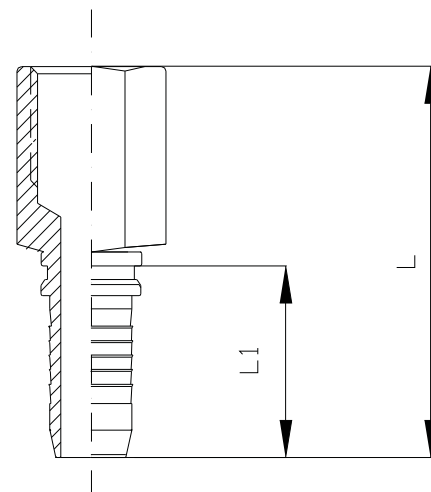
TERMINAL MF NF ASIENTO ORING PARA PRENSAR

CODIGO	ROSCA UNF	MANGUERA	L	L1
380-4-4	9/16"	1/4"	49	27
380-6-4	3/4"	1/4"	49	27
380-4-6	9/16"	3/8"	56	29
380-6-6	3/4"	3/8"	56	29
380-8-6	7/8"	3/8"	58	29
380-6-8	3/4"	1/2"	66	36
380-8-8	7/8"	1/2"	68	36
380-10-12	1 1/16"	3/4"	80	44
380-12-12	1 3/16"	3/4"	82	44



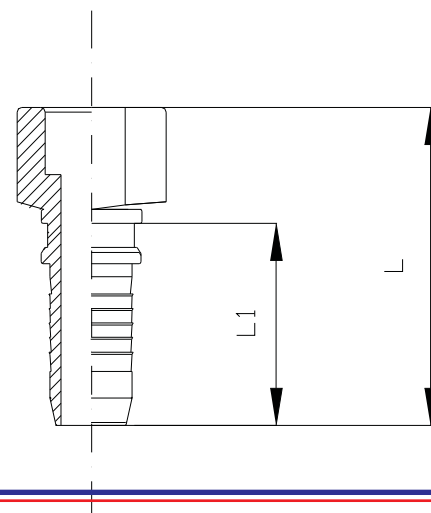
TERMINAL HF PARA PRENSAR

CODIGO	ROSCA BSP	MANGUERA	L	L1
311-2-4	1/8"	1/4"	55	27
311-4-4	1/4"	1/4"	55	27
311-6-4	3/8"	1/4"	56	27
311-6-6	3/8"	3/8"	58	29
311-8-6	1/2"	3/8"	60	29
311-8-8	1/2"	1/2"	62	36
311-12-12	3/4"	3/4"	69	44
311-16-16	1"	1"	73	48
311-5-4	1/2" 26 HILOS	1/4"	54	27



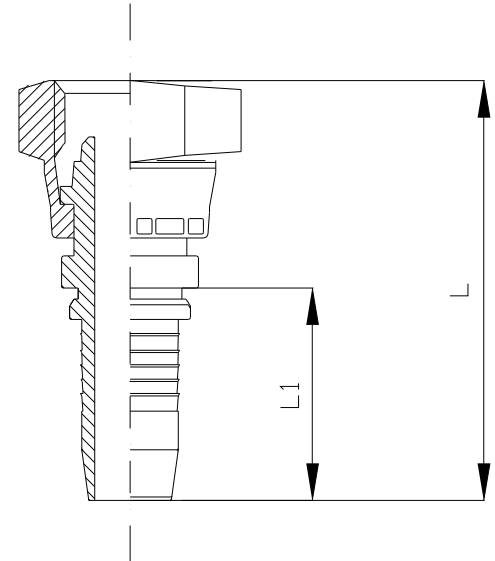
TERMINAL SALVAVIDA PARA PRENSAR

CODIGO	MANGUERA	L	L1
3SO-4-4	1/4"	42	27
3SO-5-5	5/16"	42	27
3SO-6-6	3/8"	46	29
3SO-8-8	1/2"	54	36
3SO-10-10	5/8"	55	35
3SO-12-12	3/4"	64	44
3SO-16-16	1"	72	48
3SO-20-20	1 1/4"	83	55
3SO-24-24	1 1/2"	95	64
3SO-32-32	2"	115	72



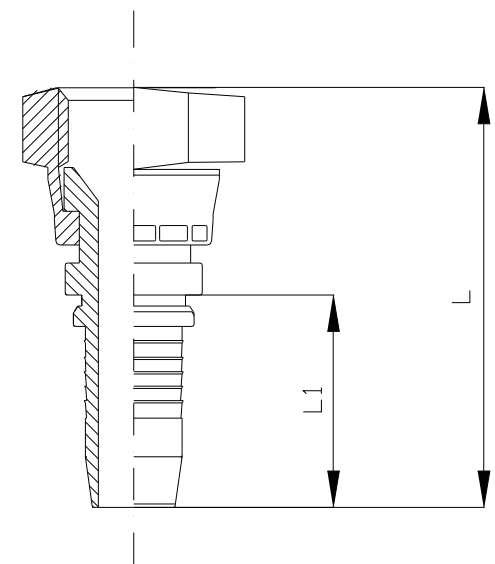
TERMINAL HG NF ASIENTO TUBO PARA PRENSAR

CODIGO	ROSCA UNF	MANGUERA	L	L1
330-2-4	7/16"	1/4"	54	27
330-4-4	9/16"	1/4"	54	27
330-6-4	3/4"	1/4"	56	27
330-4-6	9/16"	3/8"	56	29
330-6-6	3/4"	3/8"	59	29
330-8-6	7/8"	3/8"	63	29
330-6-8	3/4"	1/2"	67	36
330-8-8	7/8"	1/2"	70	36
330-8-10	7/8"	5/8"	70	35
330-10-10	1 1/16"	5/8"	83	35
330-10-12	1 1/16"	3/4"	72	44
330-12-12	1 3/16"	3/4"	81	44
330-14-16	1 5/16"	1"	94	48
330-16-16	1 5/8"	1"	95	48



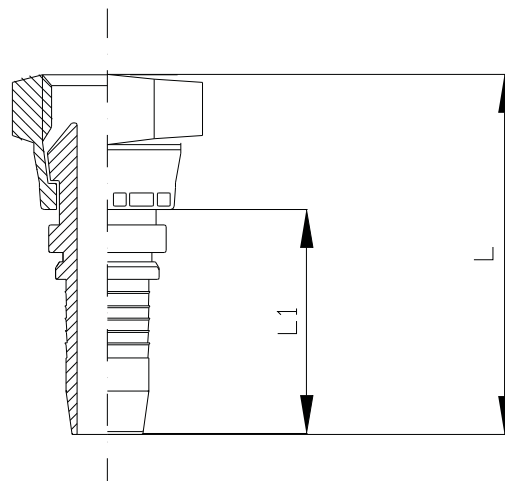
TERMINAL HG NF JIC PARA PRENSAR

CODIGO	ROSCA UNF	MANGUERA	L	L1
350-2-4	7/16"	1/4"	53	27
350-3-4	1/2"	1/4"	53	27
350-4-4	9/16"	1/4"	53	27
350-6-4	3/4"	1/4"	56	27
350-4-5	9/16"	5/16"	54	27
350-5-6	5/8"	3/8"	56	29
350-4-6	9/16"	3/8"	57	29
350-6-6	3/4"	3/8"	59	29
350-8-6	7/8"	3/8"	63	29
350-6-8	3/4"	1/2"	66	36
350-8-8	7/8"	1/2"	70	36
350-8-10	7/8"	5/8"	70	35
350-10-10	1 1/16"	5/8"	72	35
350-10-12	1 1/16"	3/4"	81	44
350-12-12	1 3/16"	3/4"	84	44
350-14-12	1 5/16"	3/4"	88	44
350-14-16	1 5/16"	1"	93	48
350-16-16	1 5/8"	1"	92	48
350-16-20	1 5/8"	1 1/4"	97	55
350-20-24	1 7/8"	1 1/2"	110	64
350-33-32	2 1/2"	2"	128	72



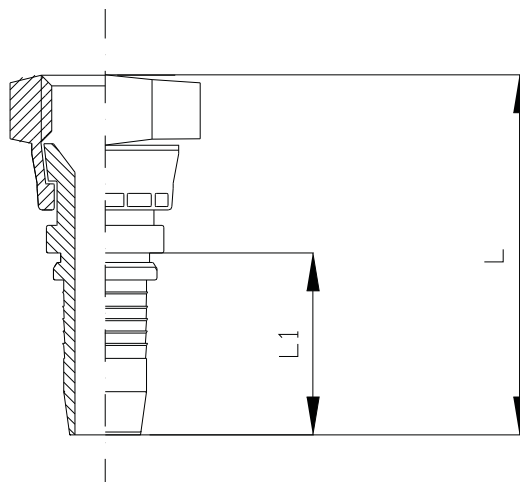
TERMINAL HG BSP ASIENTO MACHO PARA PRENSAR

CODIGO	ROSCA BSP	MANGUERA	L	L1
370-4-4	1/4"	1/4"	54	27
370-6-4	3/8"	1/4"	55	27
370-4-6	1/4"	3/8"	57	29
370-6-6	3/8"	3/8"	60	29
370-8-6	1/2"	3/8"	66	29
370-6-8	3/8"	1/2"	68	36
370-8-8	1/2"	1/2"	70	36
370-12-12	3/4"	3/4"	81	44
370-16-16	1"	1"	93	48
370-20-20	1 1/4"	1 1/4"	97	55
370-24-24	1 1/2"	1 1/2"	111	64
370-32-32	2"	2"	130	72



TERMINAL HG BSP ASIENTO JIC PARA PRENSAR

CODIGO	ROSCA BSP	MANGUERA	L	L1
371-4-4	1/4"	1/4"	54	27
371-6-4	3/8"	1/4"	55	27
371-4-6	1/4"	3/8"	57	29
371-6-6	3/8"	3/8"	60	29
371-8-6	1/2"	3/8"	66	29
371-8-8	1/2"	1/2"	70	36
371-10-10	5/8"	5/8"	71	35
371-12-12	3/4"	3/4"	81	44
371-16-16	1"	1"	93	48
371-20-20	1 1/4"	1 1/4"	97	55
371-24-24	1 1/2"	1 1/2"	111	64
371-32-32	2"	2"	130	72



TERMINAL UNION DOBLE PARA PRENSAR

CODIGO	MANGUERA	L	L1
TPD-4-4	1/4"	73	27
TPD-5-5	5/16"	70	27
TPD-6-6	3/8"	78	29
TPD-8-8	1/2"	92	36
TPD-10-10	5/8"	94	35
TPD-12-12	3/4"	112	44
TPD-16-16	1"	127	48

