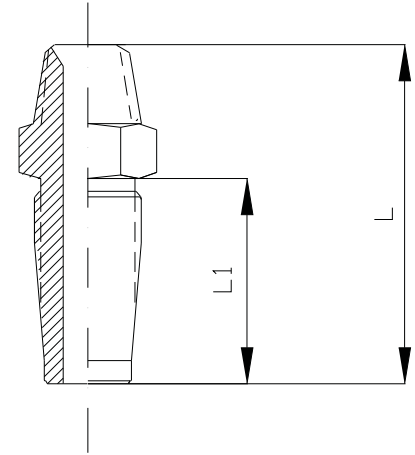


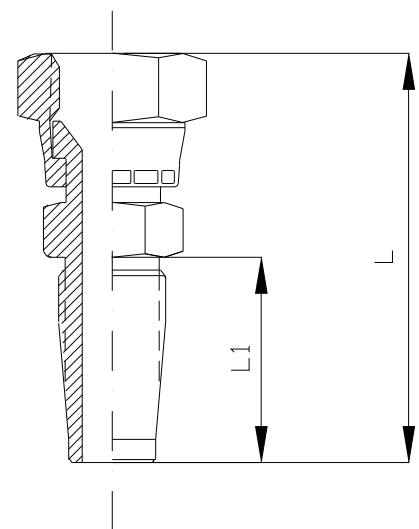
TERMINALES REUTILIZABLES R5 MF NPT

CODIGO	ROSCA NPT	MANGUERA	L	L1
490-2-3	1/8"	3/16"	45	40
490-4-4	1/4"	1/4"	50	40
490-4-5	1/4"	5/16"	50	40
490-6-7	3/8"	13/32"	61	40
490-8-8	1/2"	1/2"	69	49
490-12-10	3/4"	5/8"	69	55
490-16-14	1"	7/8"	81	55
490-20-18	1 1/4"	1 1/8"	85	45
490-24-22	1 1/2"	1 3/8"	90	45
490-32-26	2"	1 13/16"	100	57



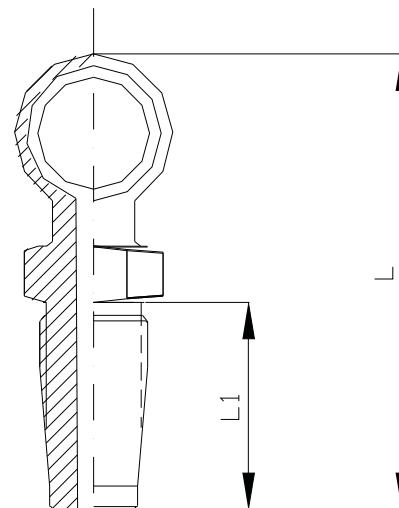
TERMINALES REUTILIZABLES R5 HG NF JIC

CODIGO	ROSCA NF	MANGUERA	L	L1
393-2-3	7/16"	3/16"	50	40
393-3-4	1/2"	1/4"	55	40
393-4-5	9/16"	5/16"	60	40
393-6-7	3/4"	13/32"	65	40
393-8-8	7/8"	1/2"	70	49
393-10-10	1 1/16"	5/8"	95	55
393-14-14	1 5/16"	7/8"	95	55
393-16-18	1 5/8"	1 1/8"	95	55
393-20-22	1 7/8"	1 3/8"	95	55
393-32-26	2 1/2"	1 13/16"	120	70



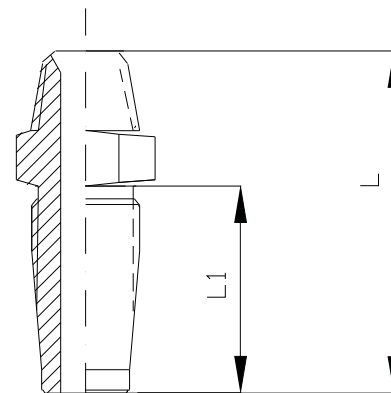
TERMINAL REUTILIZABLE ORIENTABLE

CODIGO	OJAL	MANGUERA	L	L1
400-M14-4	14mm	1/4"	58	40
400-M16-4	16mm	1/4"	60	40
400-M14-6	14mm	3/8"	63	45
400-M16-6	16mm	3/8"	64	45
400-M18-6	18mm	3/8"	65	45
400-M20-6	20mm	3/8"	66	45
400-M22-6	22mm	3/8"	67	45
400-L6-6	19,08mm	3/8"	66	45
400-L8-6	22,5mm	3/8"	68	45
400-M16-8	16mm	1/2"	70	49
400-M18-8	18mm	1/2"	71	49
400-M20-8	20mm	1/2"	72	49
400-M22-8	22mm	1/2"	73	49
400-L6-8	19,05mm	1/2"	71	49
400-L8-8	22,5mm	1/2"	73	49



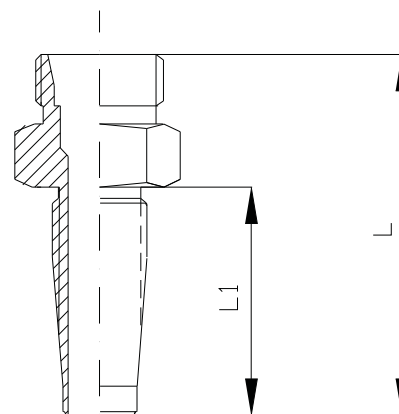
TERMINAL REUTILIZABLE MF NPT

CODIGO	ROSCA NPT	MANGUERA	L	L1
410-2-4	1/8"	1/4"	55	40
410-4-4	1/4"	1/4"	60	40
410-6-4	3/8"	1/4"	60	40
410-4-6	1/4"	3/8"	66	45
410-6-6	3/8"	3/8"	66	45
410-8-6	1/2"	3/8"	69	45
410-6-8	3/8"	1/2"	72	49
410-8-8	1/2"	1/2"	77	49
410-12-12	3/4"	3/4"	82	64
410-16-16	1"	1"	92	75



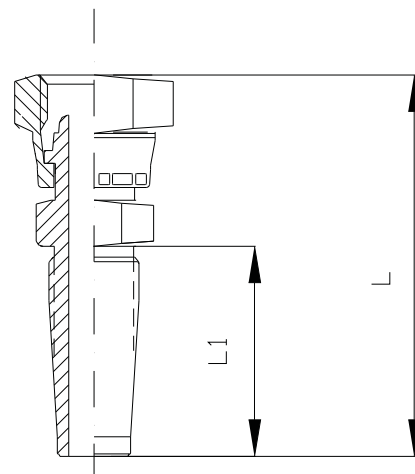
TERMINALE REUTILIZABLE MF ASIENTO VIOLA

CODIGO	ROSCA UNF	MANGUERA	L	L1
420-2-4	7/16"	1/4"	61	40
420-4-4	9/16"	1/4"	62	40
420-6-4	3/4"	1/4"	68	40
420-4-6	9/16"	3/8"	65	45
420-6-6	3/4"	3/8"	70	45
420-8-6	7/8"	3/8"	70	45
420-6-8	3/4"	1/2"	72	49
420-8-8	7/8"	1/2"	74	49
420-10-12	1 1/16"	3/4"	85	64
420-12-12	1 3/16"	3/4"	90	64
420-14-16	1 5/16"	1"	115	75



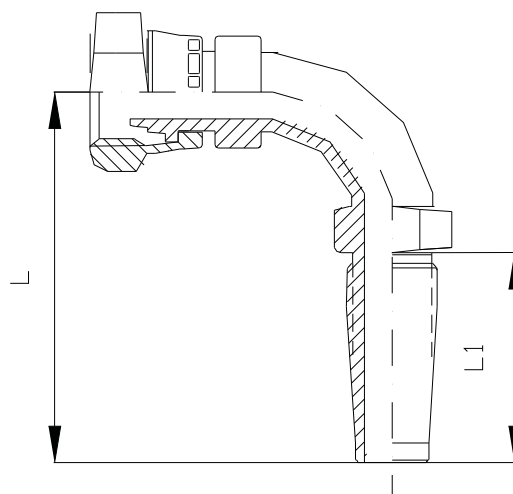
TERMINALES REUTILIZABLE HG UNF ASIENTO TUBO

CODIGO	ROSCA UNF	MANGUERA	L	L1
430-2-4	7/16"	1/4"	65	40
430-4-4	9/16"	1/4"	69	40
430-6-4	3/4"	1/4"	69	40
430-4-6	9/16"	3/8"	76	45
430-6-6	3/4"	3/8"	78	45
430-8-6	7/8"	3/8"	78	45
430-6-8	3/4"	1/2"	81	49
430-8-8	7/8"	1/2"	91	49
430-10-12	1 1/16"	3/4"	95	64
430-12-12	1 3/16"	3/4"	96	64
430-14-16	1 5/16"	1"	96	75



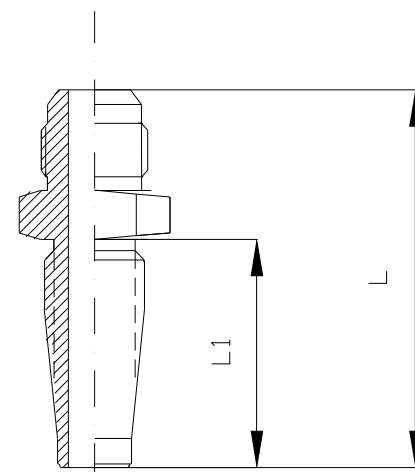
TERMINAL REUTILIZABLE HG ASIENTO VIROLA CODO 90°

CODIGO	ROSCA UNF	MANGUERA	L	L1
440-2-4	7/16"	1/4"	70	40
440-4-4	9/16"	1/4"	75	40
440-6-4	3/4"	1/4"	77	40
440-4-6	9/16"	3/8"	79	45
440-6-6	3/4"	3/8"	84	45
440-8-6	7/8"	3/8"	95	45
440-6-8	3/4"	1/2"	95	49
440-8-8	7/8"	1/2"	99	49
440-10-12	1 1/16"	3/4"	101	64
440-12-12	1 3/16"	3/4"	101	64
440-14-16	1 5/16"	1"	115	75



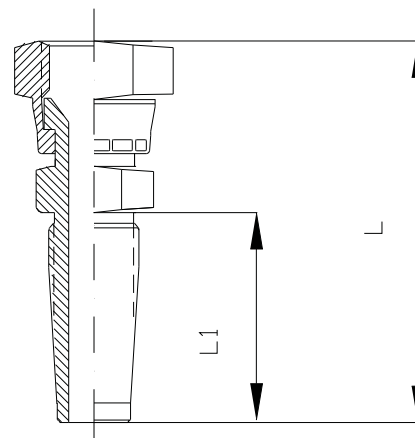
TERMINAL REUTILIZABLE MF JIC

CODIGO	ROSCA UNF	MANGUERA	L	L1
NT430-4-4	9/16"	1/4"	67	40
NT430-6-4	3/4"	1/4"	69	40
NT430-4-6	9/16"	3/8"	67	45
NT430-6-6	3/4"	3/8"	78	45
NT430-8-6	7/8"	3/8"	81	45
T430-6-8	3/4"	1/2"	90	49
NT430-8-8	7/8"	1/2"	90	49
NT430-10-12	1 1/16"	3/4"	90	64
NT430-12-12	1 3/16"	3/4"	95	64
NT430-14-16	1 5/16"	1"	96	75



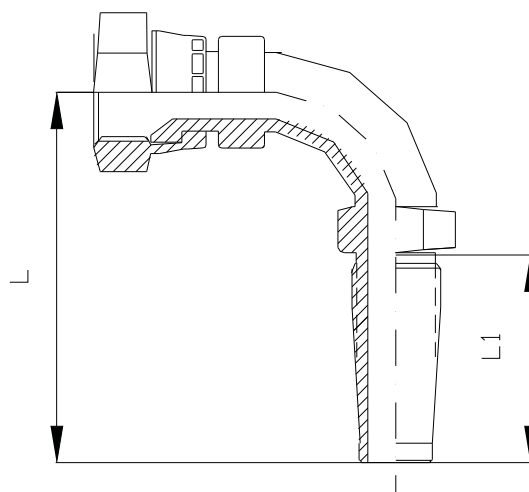
TERMINAL REUTILIZABLE HG UNF JIC

CODIGO	ROSCA UNF	MANGUERA	L	L1
450-2-4	7/16"	1/4"	69	40
450-4-4	9/16"	1/4"	71	40
450-6-4	3/4"	1/4"	72	40
450-4-6	9/16"	3/8"	73	45
450-6-6	3/4"	3/8"	74	45
450-8-6	7/8"	3/8"	85	45
450-6-8	3/4"	1/2"	83	49
450-8-8	7/8"	1/2"	85	49
450-10-12	1 1/16"	3/4"	94	64
450-12-12	1 3/16"	3/4"	94	64
450-14-16	1 5/16"	1"	102	75



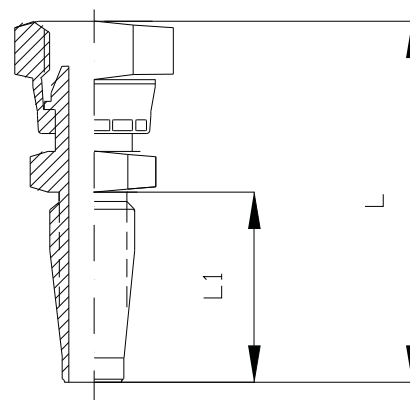
TERMINAL REUTILIZABLE HG JIC CODO 90°

CODIGO	ROSCA UNF	MANGUERA	L	L1
NT450-4-4	9/16"	1/4"	68	40
NT450-6-4	3/4"	1/4"	70	40
NT450-4-6	9/16"	3/8"	74	45
NT450-6-6	3/4"	3/8"	79	45
NT450-8-6	7/8"	3/8"	90	45
NT450-6-8	3/4"	1/2"	90	49
NT450-8-8	7/8"	1/2"	94	49
NT450-10-12	1 1/16"	3/4"	96	64
NT450-12-12	1 3/16"	3/4"	96	64
NT450-14-16	1 5/16"	1"	110	75



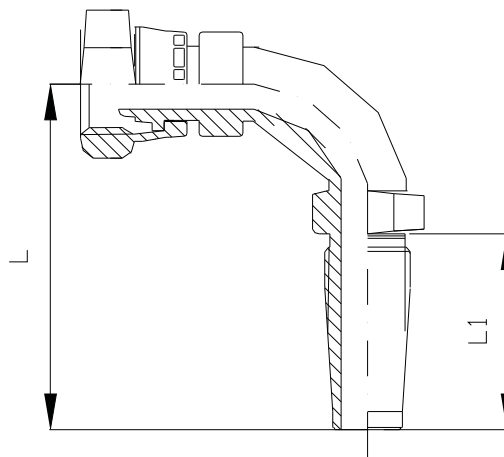
TERMINAL REUTILIZABLE HG BSP ASIENTO MACHO

CODIGO	ROSCA BSP	MANGUERA	L	L1
470-4-4	1/4"	1/4"	65	40
470-6-4	3/8"	1/4"	67	40
470-4-6	1/4"	3/8"	67	45
470-6-6	3/8"	3/8"	68	45
470-8-6	1/2"	3/8"	75	45
470-6-8	3/8"	1/2"	75	49
470-8-8	1/2"	1/2"	78	49
470-12-12	3/4"	3/4"	92	64
470-16-16	1"	1"	110	75



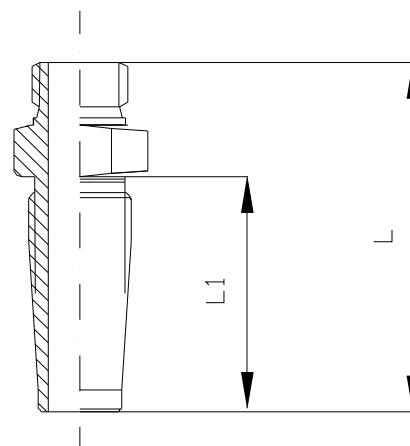
TERMINAL REUTILIZABLE HG BSP CODO 90° ASIENTO MACHO

CODIGO	ROSCA BSP	MANGUERA	L	L1
NT470-4-4	1/4"	1/4"	68	40
NT470-6-6	3/8"	3/8"	74	45
NT470-8-6	1/2"	3/8"	79	45
NT470-8-8	1/2"	1/2"	86	49
NT470-12-12	3/4"	3/4"	96	64
NT470-16-16	1"	1"	110	75



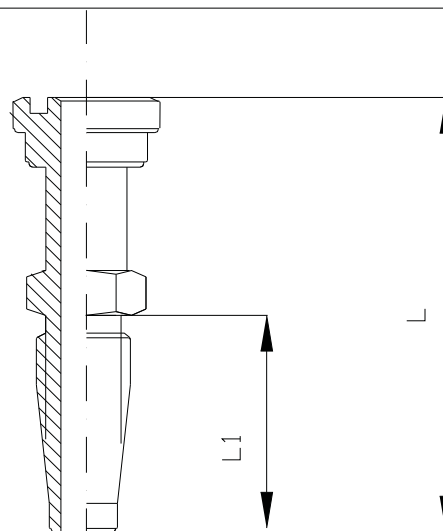
TERMINAL REUTILIZABLE MF ORING

CODIGO	ROSCA UNF	MANGUERA	L	L1
480-4-4	9/16"	1/4"	57	40
480-6-4	3/4"	1/4"	60	40
480-4-6	9/16"	3/8"	62	45
480-6-6	3/4"	3/8"	64	45
480-8-6	7/8"	3/8"	67	45
480-6-8	3/4"	1/2"	73	49
480-8-8	7/8"	1/2"	74	49
480-10-12	1 1/16"	3/4"	79	64



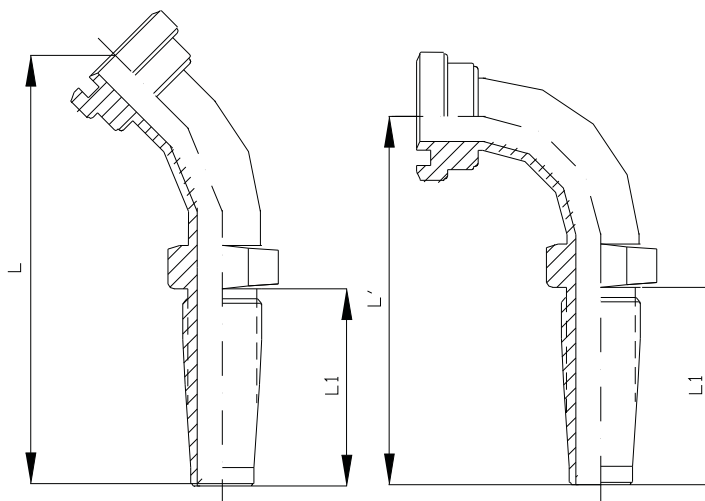
TERMINAL REUTILIZABLE ANILLO RECTO

CODIGO	DIAM. A.P.	MANGUERA	L	L1
AA480-8-8	30.1	1/2"	100	49
AA480-12-8	38.1	1/2"	100	49
AA480-12-12	38.1	3/4"	101	64
AA480-16-12	44.1	3/4"	101	64
AA480-16-16	44.1	1"	106	75
AA480-20-16	50.8	1"	106	75



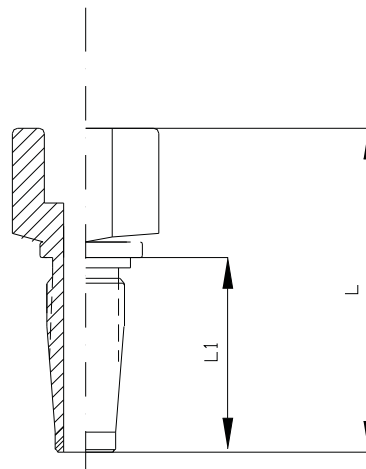
TERMINAL REUTILIZABLE ANILLO CODO 45° Y CODO 90°

CODIGO	DIAM. A.P.	MANGUERA	L	L'	L1
NTAA480-8-8	30.1	1/2"	98	83	49
NTAA480-12-8	38.1	1/2"	99	83	49
NTAA480-12-12	38.1	3/4"	103	83	64
NTAA480-16-12	44.1	3/4"	103	83	64
NTAA480-16-16	44.1	1"	112	96	75
NTAA480-20-16	50.8	1"	112	96	75
NTAA480-16-20	44.4	1 1/4"			55
NTAA480-20-20	50.8	1 1/4"			55
NTAA480-20-24	50.8	1 1/2"			64
NTAA480-24-24	60.3	1 1/2"			64
NTAA480-24-32	60.3	2"			72
NTAA480-32-32	71.4	2"			72



TERMINAL REUTILIZABLE SALVAVIDAS

CODIGO	MANGUERA	L	L1
4S0-4-4	1/4"	49	40
4S0-6-6	3/8"	55	45
4S0-8-8	1/2"	62	49
4S0-10-10	5/8"	70	55
4S0-12-12	3/4"	81	64
4S0-16-16	1"	83	75
4S0-20-20	1 1/4"		55
4S0-24-24	1 1/2"		64
4S0-32-32	2"		72



UNION DOBLE REUTILIZABLE

CODIGO	MANGUERA	MANGUERA	L	L1
TRD-4-4	1/4"	1/4"	94	40
TRD-6-6	3/8"	3/8"	101	45
TRD-8-8	1/2"	1/2"	115	49
TRD-12-12	3/4"	3/4"	121	64
TRD-16-16	1"	1"	132	75

